

“Where will our knowledge take you?”

## TeMAP

### Technology, Management, Acquisition & Planning



#### Background

Through life management of new, emerging and existing technologies is a difficult process for many industries. The ability to assess the applicability and readiness of technologies for integration into projects can present a tough challenge for today's organisations, regardless of the markets they are involved in. Added to this, there is the need for organisations to produce plans and graphical outputs to support their research and monitor future progress against.

#### Challenge

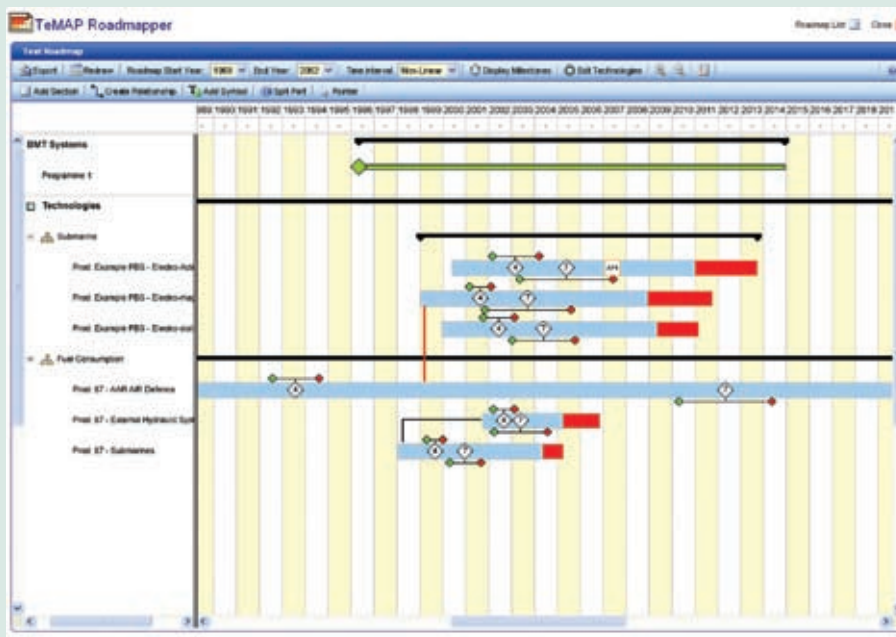
There are a large number of software tools available for producing graphical outputs, such as roadmaps, but few are able to combine assessment, data filtering, prediction analysis and the automated production of graphical outputs all within the same application.

The challenge for BMT was to produce a web-based software tool that was generic and intuitive enough to meet the needs of customers who are involved in different markets, using different business processes, but one powerful enough to produce rich, accurate data analysis and feature-rich outputs to the user.

#### Analysis

BMT spent two years conducting research by liaising with customers from industries as diverse as Defence and Oil/Gas. Many of these had a keen business interest in Through Life Management (TLM).

By collating and analysing the requirements captured, BMT were able to produce a system requirement specification and software product that was broad enough to meet the requirements of the different customers but still retain the powerful functionality to meet the original goal.



## Product

TeMAP provides a through life technology management tool. It allows users to acquire the right technologies needed for a project at the right time at the right cost.

The application is a modular construction built around the 'core modules' of Administration, Document Management, Risk Management, Action Planner and Audit. Module examples are:

- **Technology Library** – A repository of technologies residing in a hierarchical database structure. Data population can be achieved via data import or or built up through use. The library will record where technologies have been used previously and their maturity assessments.
- **Requirement Manager** – Allows the user to either construct and manage a basic requirement set for a Project or to synchronize with the specialist Requirement Management tool DOORS.
- **Product Manager** – Allows the user to construct a product breakdown and associate requirements and technologies at the appropriate nodes. The level of decomposition is only limited by the users ability to manage the data.
- **Roadmapper** – Provides graphical output from the TeMAP tool in the form of a Roadmap. In addition to the linked data the user can also manually add sections and symbols to bring richness to the roadmaps.
- **Administration** – User access and associated security features, system wide settings and import/export functions.
- **Document Manager** – Provides repository for documentary evidence, comments, etc. Both Simple and advanced search facilities are provided.
- **Risk Management** – The risk manager provides the user with a simplified version of the HARMS functionality. The risk manager is fully customizable and can be accessed or associated from most modules.
- **Action Planner** – Allows the creation of action plans to achieve a goal. Each goal can be user defined although the more obvious Gates are included as standard.



## Benefits

- TeMAP provides users with a single tool that allows them to acquire the right technologies needed for a project. It does this by assessing the possible technologies, planning and management of the most effective exploitation route and producing the integrated supporting technical evidence needed for a successful business plan.
- The tools interface is intuitive for the first time user, and consistent in its presentation and simple navigation. This simplicity is important when used in live situations such as brainstorming.
- Data is retained for reuse which eliminates the need to reassess and re-audit for each new project. This is particularly useful in the network environment.

## Innovative software solutions through powerful business analysis